



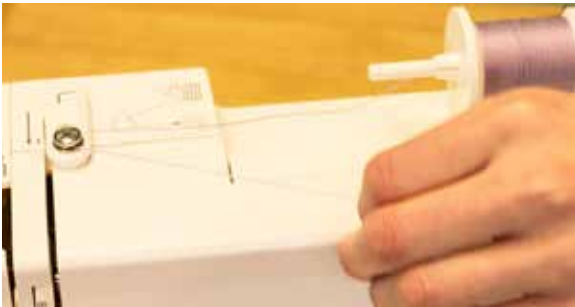
zeal

## let's get to the basics

Your machine is out of the box and you have plenty of ideas waiting to get out, right? Let's get the basics out of the way. Before you start sewing, you'll have to wind a bobbin and then thread your machine. But don't be intimidated – it's easier than you think with Zeal's friendly features. Once you've followed these quick and easy steps, simply select a stitch and you're ready to sew!

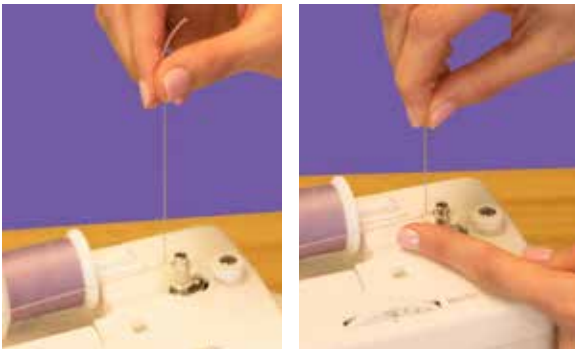


### the bobbin



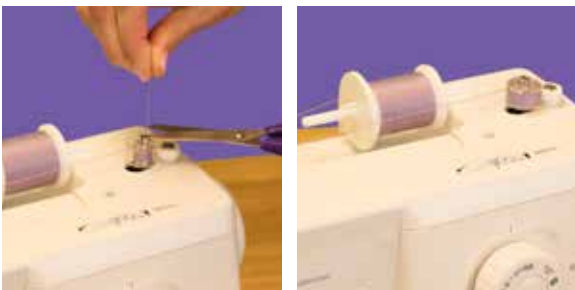
- Drawing the thread from the spool, guide it around the bobbin winding the thread guide.
- Follow the thread path shown on the machine.

1.



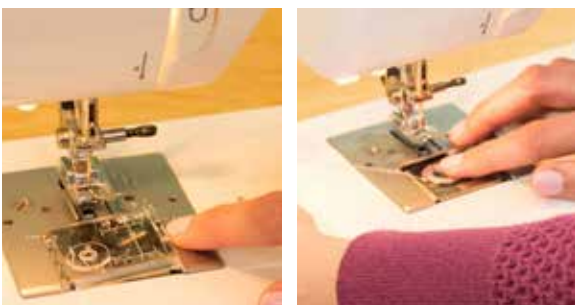
- Bring the thread up through the hole in the bobbin. Position the bobbin on the bobbin winder spindle.
- Pull out the handwheel to activate the bobbin winder.
- Push the bobbin to the right. Press on the foot control to wind the bobbin.

2.



- Start winding bobbin a few rotations, stop and trim extra thread next to hole on bobbin.
- Wind the bobbin till full
- Return the bobbin winder spindle to its original position, remove the bobbin and cut the thread. Push the handwheel back in.

3.



- Remove the bobbin cover by pushing the release to the right.
- Place the bobbin in the bobbin case compartment with the thread unwinding counterclockwise. Hold the bobbin and slide the thread into the tension slot.
- Replace the bobbin cover.

4.

## the needle



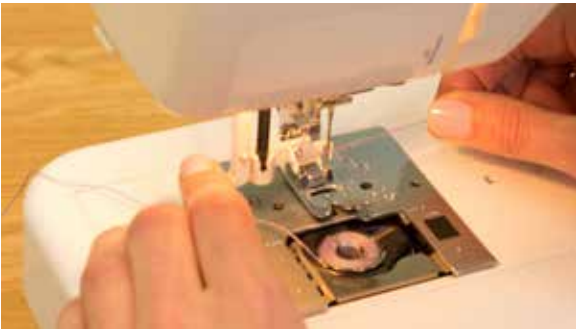
- Place the thread on the spool pin with thread coming from underneath. Slide on the spool cap tightly against thread spool.
- Follow the numbered thread path as shown on the machine.

1.



- Raise the presser foot. Turn the handwheel counterclockwise to bring the needle up to the highest position.
- Thread the take-up lever from right to left (step #3 on the machine). Finish threading through the needle bar thread guide.

2.



- Lower the presser foot. Pull down the needle threader, bring the thread around the needle threader and in front of the eye of the needle.
- Release the lever to engage the needle threader and thread the needle.

3.



- Pull the loop through and your needle is threaded. Bring up the bobbin thread by holding the needle thread and turning the handwheel counterclockwise. The bobbin thread will loop around the needle thread. Pull the loop through to retrieve the bobbin thread.

4.

**baby lock**  
*Be* genuine collection